



**paintsmart**  
THE SMART WAY TO BUY GLOBAL BRANDS

➔ Inside this issue

HIGHLIGHT 1 - FINIXA FILLER PROMOTION

HIGHLIGHT 2 - FINIXA SPECIALS

HIGHLIGHT 3 - NEW IWATA WIDER 2 SPRAY GUN

HIGHLIGHT 4 - IN STORE SPECIALS

**linkuppaints**  
HAMILTON

February / March 2021



## Putty & Filler Promotion

Finixa has an extensive range of quality putties and fillers.

Try these products today, you won't be disappointed

### GAP 00 Black Polyester Putty

The go to putty for most substrates including plastics, galv, aluminium etc. Sands very fine and a fantastic filler for plastic.

**\$39<sup>95</sup>**

### GAP 20 Fine Putty

A real fine polyester finishing putty that is easy to sand and very fine.

**\$32<sup>50</sup>**

### GAP 30 Light Putty

A universal polyester finishing putty, a little lighter than GAP20 easy sanding and a great all round putty.

**\$27<sup>50</sup>**

### GAP 33 Polyester Filler

Universal extra light polyester filler with good adhesion to steel, E-coat, galvanised steel, fibre glass etc. GAP33 is fast drying and very easy sanding which makes this great filler a go to product.

**FREE**

**Purchase any two tins of GAP 00-20-30 putty OR  
two tins of GAP 33 and receive a Finixa T-shirt FREE**

*While stocks last*



## UV Primer

Perfect for spot and smart repair. A one-component UV curable primer- filler with a 2 minute cure. No mixing required so increased productivity and for use on properly cleaned and sanded steel, aluminum, galvanized steel, cured and sanded OEM finishes, polyester body fillers, rigid and semi-rigid plastic etc.

FINGAP150

## UV Cleaner

Especially formulated for UV primer to be used after curing and before sanding, increases the life span of the abrasive material and can also be used to remove non-cured UV primer

FINGAP1200

## UV Putty

Universal UV putty is perfect for spot & smart repair. The product is chemically stable directly after curing; no marking, sagging or shrinking, and dries in 2-5 minutes, depending on layer thickness. The handy cartridge pumps directly onto your spreader, no waste.

FINGAP80

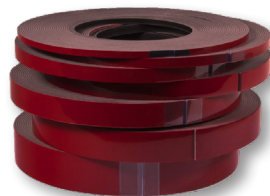
Ask your PSG rep for a demonstration today



## Double Sided Tape

Acrylic adhesive base tape for attaching protective side mouldings on vehicles and many other applications. The advantage of this unique acrylic tape is that the initial strength after 2 minutes is 80% of the total, whereas traditional double sided foam tape requires 12 to 24 hours to reach the same. It offers strong initial contact and superior adhesion at any given temperature.

4mm	\$ 7 <sup>95</sup>
6mm	\$ 9 <sup>30</sup>
12mm	\$ 16 <sup>90</sup>
15mm	\$ 22 <sup>50</sup>
19mm	\$ 27 <sup>50</sup>



FINDZB04-06-12-15-19

## Scuff Rolls



High quality non-woven nylon abrasive tissue with impregnated sanding grain, to quickly and comfortably de-polish surfaces that need to be sprayed.

100mm x 10mtr Red (very fine) and Grey (Ultra Fine)

ONLY  
**\$49<sup>95</sup>**

SBR10 - Red  
SBR20 - Grey

## Contact Glue

Extremely versatile, fast drying industrial strength contact adhesive that bonds a wide range of materials.

FINTSP1100

ONLY  
**\$14<sup>95</sup>**



## Plastic Adhesion Promoter

Adhesion promotor to be used on most plastics, spray one light coat and then paintable after 15 minutes. Offers excellent adhesion.

FINTSP030

ONLY  
**\$14<sup>95</sup>**



## 1K Clearcoat

Fast drying, high quality professional 1K clear coat with easy application and constant atomization pressure. Great flow and gloss level with non-fading and UV resistance. All this in a handy 400ml aerosol.

FINTSP1100

ONLY  
**\$13<sup>40</sup>**



## Control Spray

The temporary gloss layer of the Finixa control spray replaces the clear coat when checking colour, then evaporates without leaving any trace on the surface. Spray a thin layer on a sample plate (that is sprayed with a basecoat) to create a temporary shine. Compare the sample plate with the desired colour for inspection.

FINTSP030

ONLY  
**\$12<sup>95</sup>**



## Smooth Tack Cloth



The tack cloth TAK 30 is perfect for all painting and associated cleaning. It is also ideal in the office, at home and any other place where absorption of dust is required. Its unique water-soluble hydro-impregnation absorbs and holds dust and dry dirt reliably. The cloth is totally free from silicone and wax, absolutely compatible with all kinds of paint and it never dries out.

FINTAK30

6 CLOTHS ONLY  
**\$9<sup>40</sup>**

## Dust Masks



Quality P2 dust mask that is lightweight and comfortable to wear. An advanced low resistant exhalation valve reduces hot air build-up and makes breathing easy in hot/humid environments.

A latex-free material to avoid irritation

FINMAS12

BOX OF 15  
**\$39<sup>95</sup>**

## Half Mask Respirator Kit

A high quality A1P2 comfortable silicone rubber half mask that fits tight around the face and does not cause irritation. Complete with adjustable head and neck band, this starter kit is great value. Kit comes with mask, vapour and dust filters with retainers, all in a convenient storage container. Replacement organic vapour and dust cartridges available.

FINMAS00



ONLY  
**\$62<sup>50</sup>**



## Wider 2 Spray Gun

This new addition to the Iwata range replaces the very popular W200 and comes with some great improvements.

The gun head is lighter and a more comfortable fit with all adjustment knobs improved for easier adjustment. The spray pattern adjustment is improved making fine tuning far easier.

Larger air valve seats provide more even fan pattern and more even paint flow.

Wider 2 gun head only 1.5 or 1.8mm setup



**NEW**

ONLY  
**\$340**

Suction feed bowls available upon request

## LED UV Lamp

Powerful, rechargeable LED UV curing lamp for rapid curing of UV primer. Depending on the primer used and film thickness, curing can be as little as 2-4 minutes. No

heat is generated during the curing process so things like plastic parts are no problem. Sanding can be done immediately after cure. Curing area is 200mm at a distance of 120mm.



NOVA-UVS LAMP

**\$650**

Tripod stand available which can hold one or two lamps

Ask your PSG Rep for a demonstration

## A SMART repair solution Polyester Spray Putty

Isocyanate-free, fast drying, sandable after 1 hour curing at 20°C & normal humidity. High-build capacity up to 100µm in 3 layers (leave flash off 5 minutes between layers). Excellent adhesion on bare metal, galvanized substrates & sanded old paint.

## Clearcoat

A quality Isocyanate-free 2K clear. Apply 2 layers with an interval of 10 minutes to get the perfect spray gun finish, which is scratch free, petrol and UV resistant and suffers no weather influences.



FINTSP720



FINTSP710

ONLY  
**\$39<sup>50</sup>**

## 2Spray Mini Gravity Spray Gun

Ideal for spot repair, has an adjustable spray pattern and fluid control with precise air control. Finished in a durable chrome with 125ml cup.



ONLY  
**\$125**

## Cone Filters



High quality paint straining cone filters 190mu Available in box of 250 or Carton of 1000

per box  
**\$26<sup>00</sup>**

PSNONE

per carton  
**\$90<sup>00</sup>**

## Smart Paint Cups

A recently added line to our ever increasing 'Smart' range of products. The Smart Paint Cups are a quality disposable cup that fits to your gravity feed spray gun for fast and efficient application, with no need to clean the gun cup. Available in 400ml, 650ml, 850ml and in 125mu and 190mu



Ask your PSG Rep for further details

## Factory Pack Black & White



Sbralac High Coverage White and Jet Black are high opacity, ready-made acrylic polyurethane products designed for efficient car refinishing, fleet vehicles, and light industrial applications. The High Coverage White and Jet Black provide superior coverage in 2 coats using a dedicated hardener. This 2:1 hardened product is great value.

4 Litre White or Jet Black

**\$112<sup>00</sup>**

1 Litre Standard or Fast Hardener\*

**\$32<sup>00</sup>**

\*2 x 1L Hardener required per kit

## Abrasive Prep & Clean

Prep & Clean removes wax, grease, and other contaminations from the surface, and

is the only paste that effectively removes the mould release agents that can cause paint problems and possible de-lamination. It is also excellent for preparing blend areas and general substrate preparation prior to painting.



473 ml  
**\$29<sup>95</sup>**

PPC535473ML  
EPC5353L

3.45 kg  
**\$72<sup>50</sup>**

## Spray Overall

High quality carbon fibre reinforced one piece spray gun overalls. Robust zips and handy pockets. Plenty of vents to remain cool while working.



ONLY  
**\$42<sup>00</sup> ea.**

Available in small through to 5XL



# SIMPLY SUPERIOR



## EcoTech Finish Coat - 10L & 20L

Code: 48x2x0

Available in standard Colour Steel Colours

## ST1-P Turbine Dust Extractor

Code: ST1-P

- **Powerful 1300 watt suction turbine motor**
- **No bags to replace**
- Automatic on/off when in use
- Adjustable speed suction control
- All steel body construction
- Self cleaning filter system (automatic & manual operation)
- **5 year motor guarantee - these machines will outlast and outperform any traditional vacuum type dust extraction system**
- Additional hoses are available, including standard dust hoses for rubbing blocks, air/dust hoses, and electric/dust hoses. Each of these are available in 5M or 9M lengths



Unit is supplied with an air/dust 'extraction' hose - but not with other pictured accessories



All orders for February and March 2020 will receive a free Finixa Premium Sander Valued at \$435.20 + GST.



**\$2,699** +GST

10L  
**\$113.84** +GST

20L  
**\$215.14** +GST

\*Please check the TDS for more information



Code: 5200xx

## Lightning Paint Stripper

- Fast Acting
- Deep penetrating
- Non drip Gel formula
- Washes off with water
- Easily applied using a paint brush
- Suitable for domestic, industrial, automotive, and marine applications
- Effective on oil, and water based paints, acrylics, varnishes, and epoxies
- Timber, metal, and masonry surfaces



500ml **\$ 13.74** +GST  
 1 Litre **\$ 17.89** +GST  
 4 Litre **\$ 47.14** +GST  
 20 Litre **\$195.84** +GST



## Protector Bedliner Kit

Code: 2041000x

This highly resistant 2K PU texture paint protects against wear and environmental stress. Mipa Protector is characterised primarily by its outstanding shock and scratch resistance, its high UV and weather resistance, as well as by its resistance to fuels and oils. The Kits comes either in Black or a Tintable version and contain 4 Litres of product plus an application gun. The product is 3:1 so the kit contains 4x1L tins with 750ml of the Protector Paint and 4x250ml tins of the hardener. Simply pour the hardener into the 1L tin, shake to mix and screw the tin onto the gun and you are ready to go.

In addition to the protection of truck and Ute beds, there are numerous other possible applications for this extremely resistant and durable paint. e.g.

- Bodies and rims of SUV's and off road vehicles
- Floors and storage areas in caravans
- Underbodies and Chassis
- Bullbars, running boards, roof racks, wheel covers etc
- Trailers, access ramps, vehicle decks etc

**\$240** +GST



You can earn SmartTrade or GetGenuine Rewards points when you do business with Linkup Paints Hamilton. Conditions apply.



Download the SmartTrade or GetGenuine App to access your points, rewards and awesome offers



### Your local PaintSmart Distributor

LINKUP PAINTS HAMILTON

6 Killarney Lane, Frankton, Hamilton 3204  
T. 07 847 0933

www.linkup.co.nz



Find us on Facebook  
www.facebook.com/linkuppaints

PaintSmart Distributors Nationwide view more contact details online at [www.paintsmart.co.nz](http://www.paintsmart.co.nz)

Whangarei Paint Centre | Wairau Paint Centre Auckland | **Linkup Paints Hamilton** | Linkup Paints Bay of Plenty  
 Complete Paints Napier | Complete Paints Palmerston North | Paint Spot Hastings | Linkup Paints Wellington |  
 Linkup Paints Tasman